

1. Arco de Oro

(Arc of Gold)

Why Arco de Oro?

- 1) artisanal workings on surface over a 5 km strike length
- 2) IP chargeability anomaly - widening in northwesterly direction
- 3) extensive surface sampling conducted by SLG with very anomalous gold values
- 4) very significant grades already drilled

....let's have a look:

Salvadora Target Zones

Codelco El Salvador Mine

Potrerillos Smelter 30 km

3) Tres Amigos

2) Cerro Blanco

1) Arco de Oro

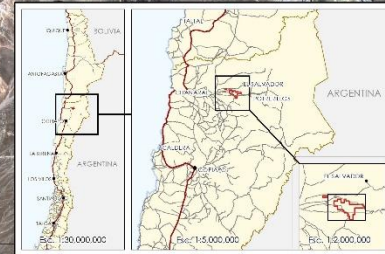
Caballo Muerto

Caballo South

12 Km

17 Km

N



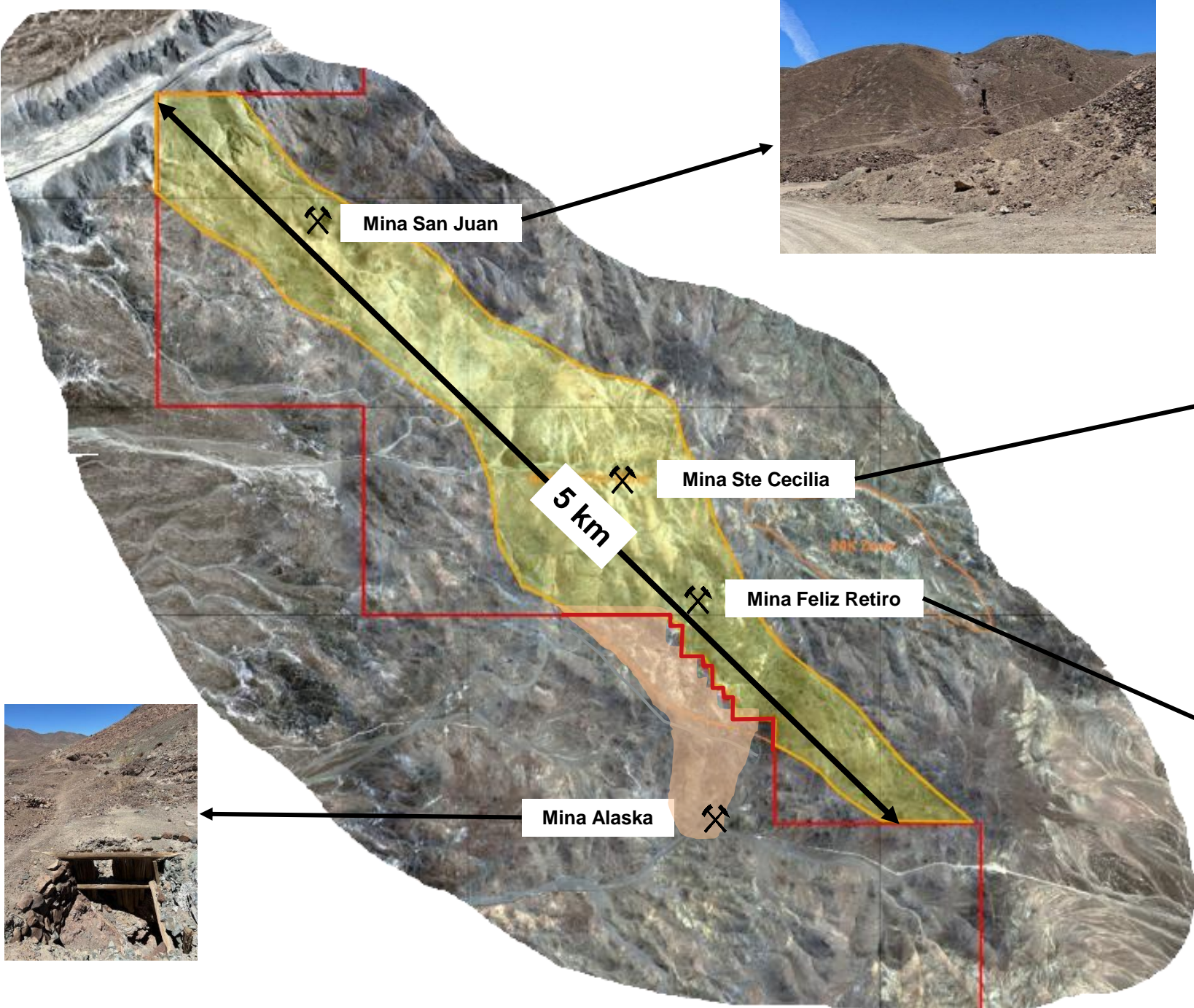
SAN LORENZO GOLD CORP

Salvadora Target Zones

REGION:	ATACAMA	PROYECTO:	SALVADORA
PROVINCIA:	CHANAVAL	EJECUTANTE:	MINERA SAN LORENZO
COMUNA:	DIEGO DE ALMAGRO	INGENIERO:	TRINIDAD WALKER
PROYECCION:	U.T.M.	HOJO:	19 SUR
DIATUM:	PSAD 1956	DIBUJANTE:	ROBERTO TORRES
ARQUIVO:	CHILEANOS/CHILEANOS/CHILEANOS	ESCALA:	1:40,000
		FECHA:	12-02-2025
		HOJA:	1-1

Arco de Oro

Artisanal Mine Locations



Shallow Artisanal Workings

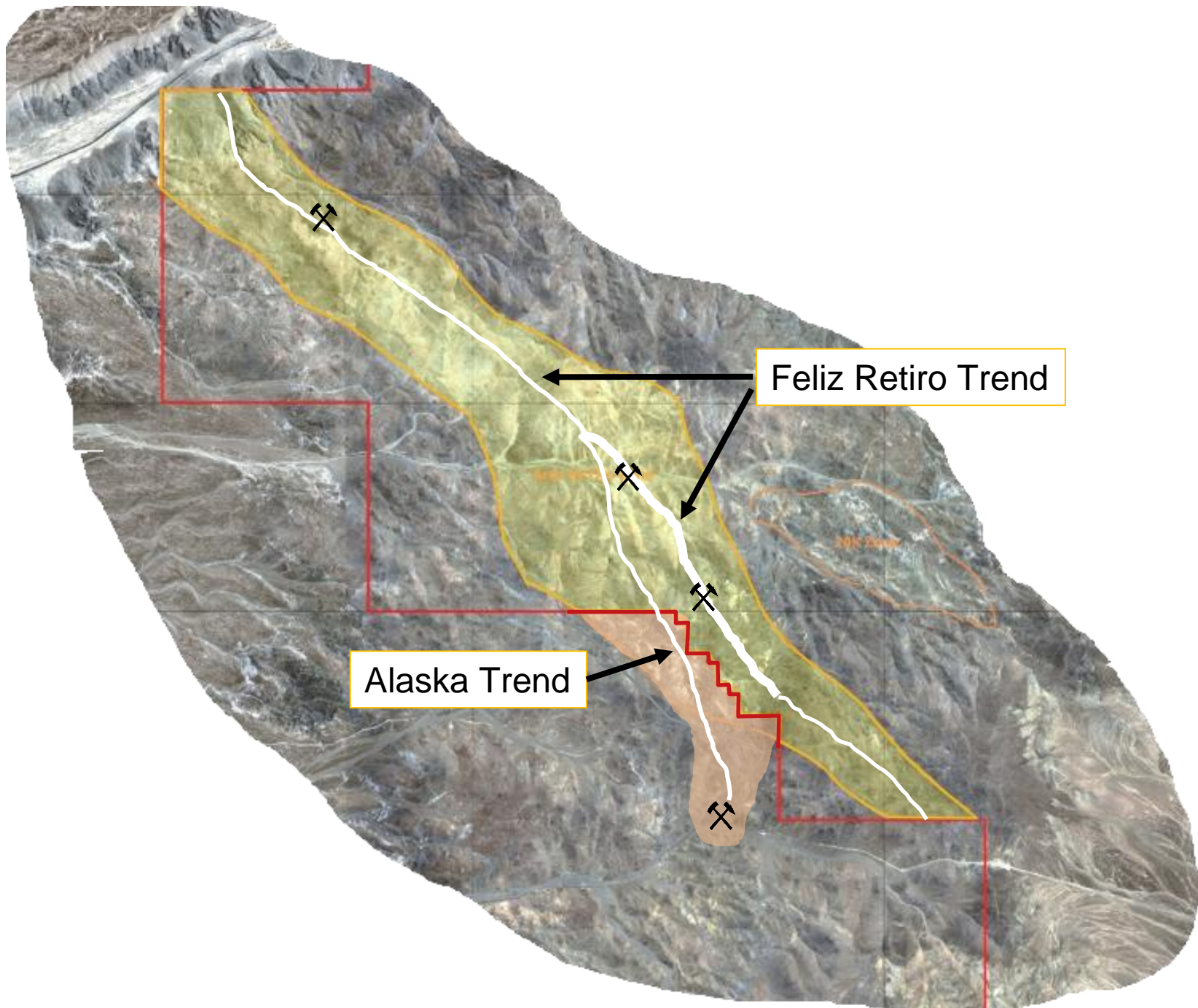
Arco de Oro

The Arco de Oro trend is characterized by shallow artisanal workings along its strike. The workings are shallow (mostly 2-5 meters in depth) and reflect mining efforts conducted by individuals or groups of “artisanal miners” over numerous decades. Rock mined by this method was sufficiently high grade to justify the work associated with mining using traditional tools such as picks and shovels and more recently backhoes/excavators and then trucking the raw ore in small truckloads for processing.

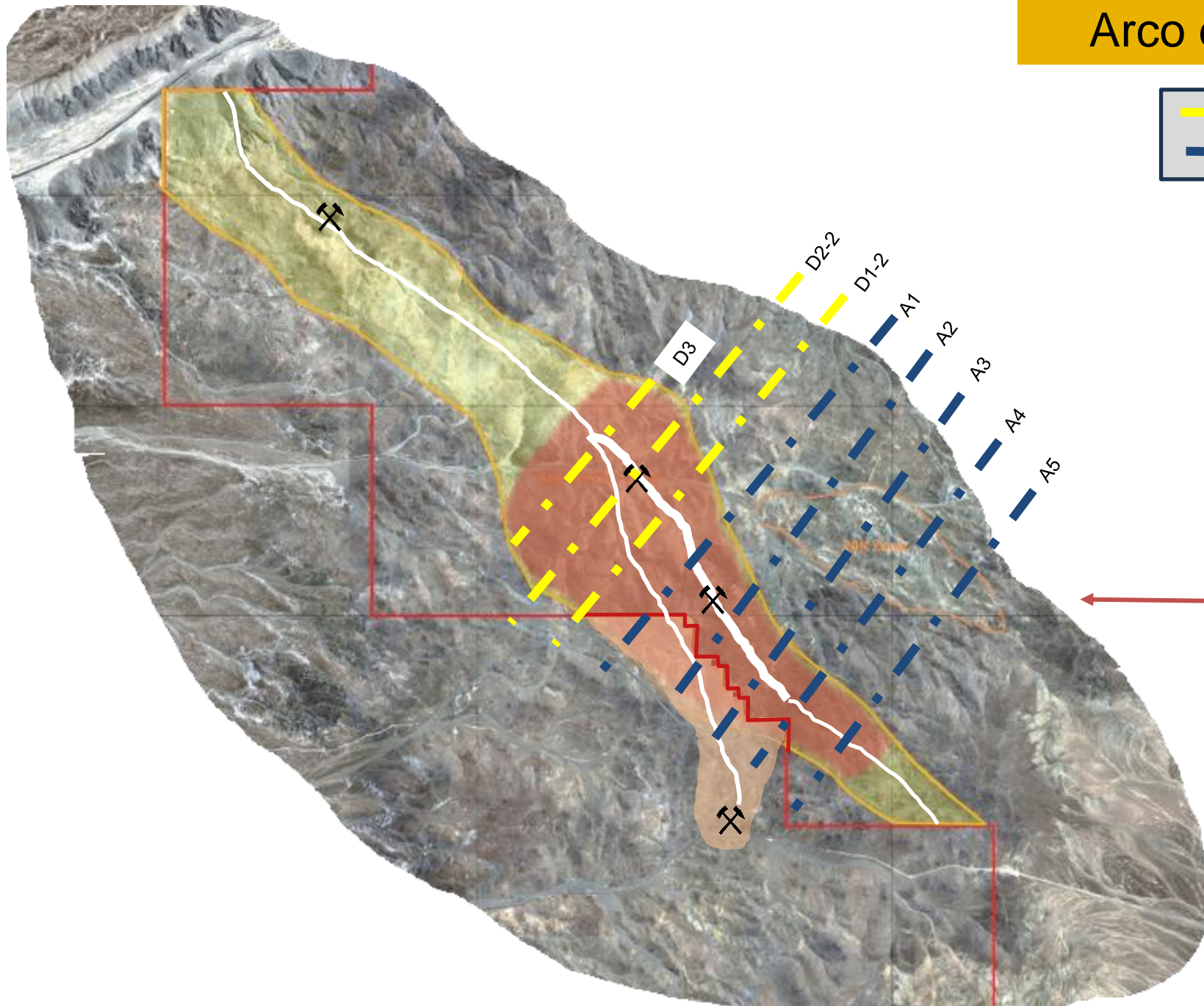
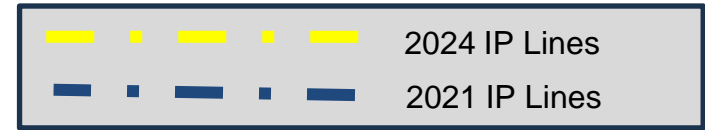


Arco de Oro

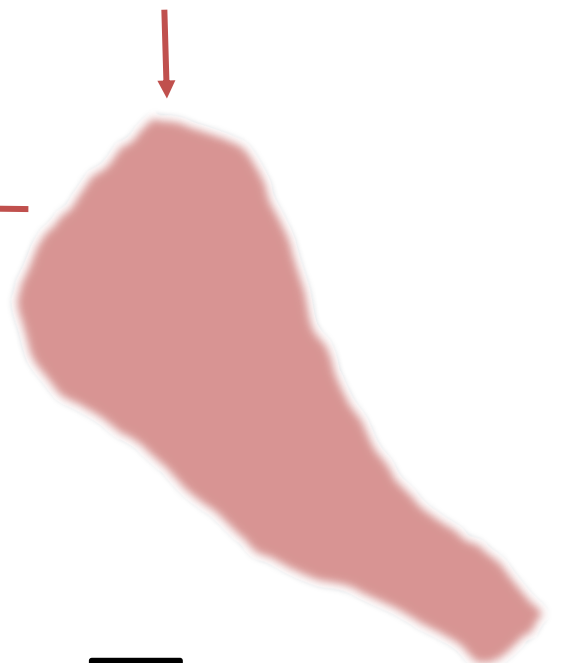
Main Mineralization Trends
(identifiable from artisanal surface workings)



Arco de Oro – Induced Polarity



IP Chargeability Anomaly
> 10mv/V



Arco de Oro – Prior Drill Results

Phase 1
First 4 Shallow Holes Drilled

Hole #		From(m)	To(m)	Width(m)	Cu %	Au g/t
SAL 07-22		100	114.7	14.7	0.08	2.52
	including	100	103	3	0.24	11.69

(on Feliz Retiro trend)

Hole #		From(m)	To(m)	Width(m)	Cu %	Au g/t
SAL 04-18		70	82	12	0.27	1.74
	including	71	75	4	0.57	6.84

(on Feliz Retiro trend)

Hole #		From(m)	To(m)	Width(m)	Cu %	Au g/t
SAL 04-16		109	116	7	0.26	4.55
	including	112.8	114	1.2	0.32	18.2

(on Feliz Retiro trend)

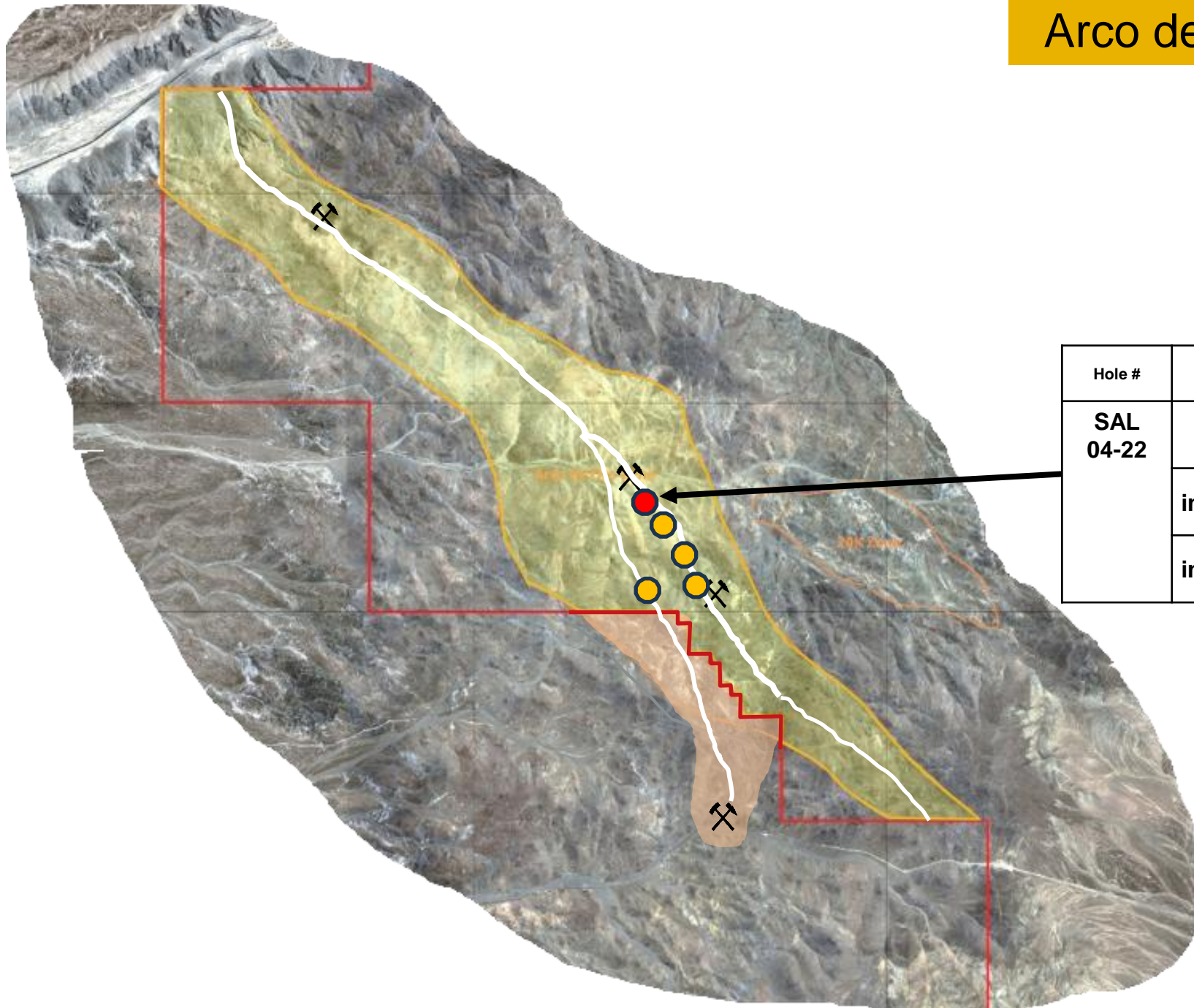
Hole #		From(m)	To(m)	Width(m)	Cu %	Au g/t
SAL 09-22		97	99	2	0.47	9.95

(on Alaska Trend)

Arco de Oro – Prior Drill Results (cont'd)

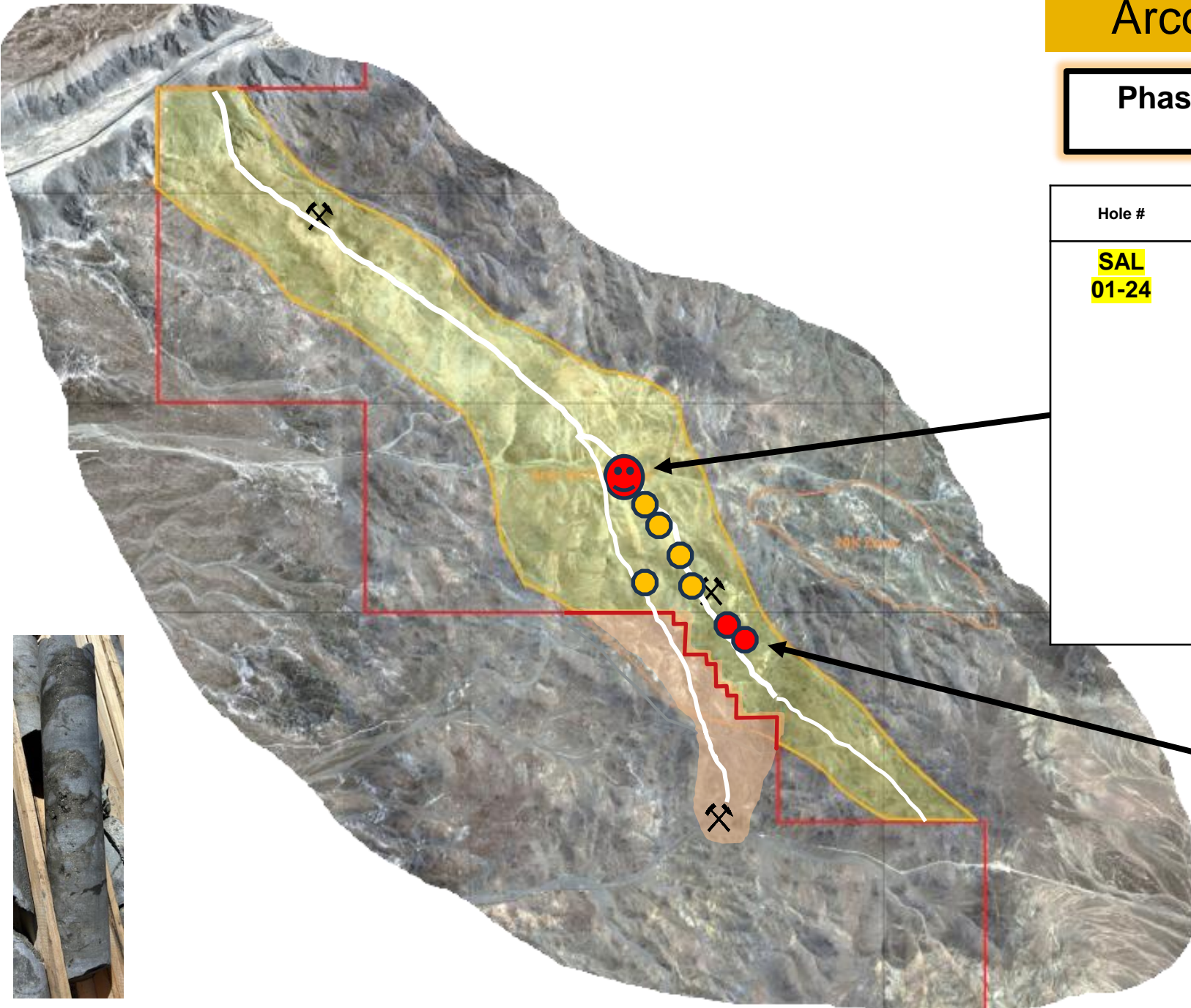
**Phase 2 – Deep Hole
Drilled Into Sulphides
(intersected the vein system at
300 m to confirm continuity of
system at depth)**

Hole #		From(m)	To(m)	Width(m)	Cu %	Au g/t
SAL 04-22		329	351.5	22.5	0.18	4.74
	including	333	339.5	6.5	0.39	16.27
	including	335.5	337	1.5	0.38	58.18



Arco de Oro - Drill Results (cont'd)

Phase 3 - Recent Drilling – Just Completed
(to be announced Monday pre-market)



Hole #		From(m)	To(m)	Width(m)	Au g/t	Cu %
SAL 01-24	A	15.7	22.2	6.6	5.61	Cu Pending
	including	15.7	18.0	2.3	11.14	
	B	110.0	119.7	9.7	4.4	
	including	117.0	118.4	1.4	12.2	
	C	151.1	174.4	23.3	4.8	
	including	152.8	156.8	4.0	17.95	

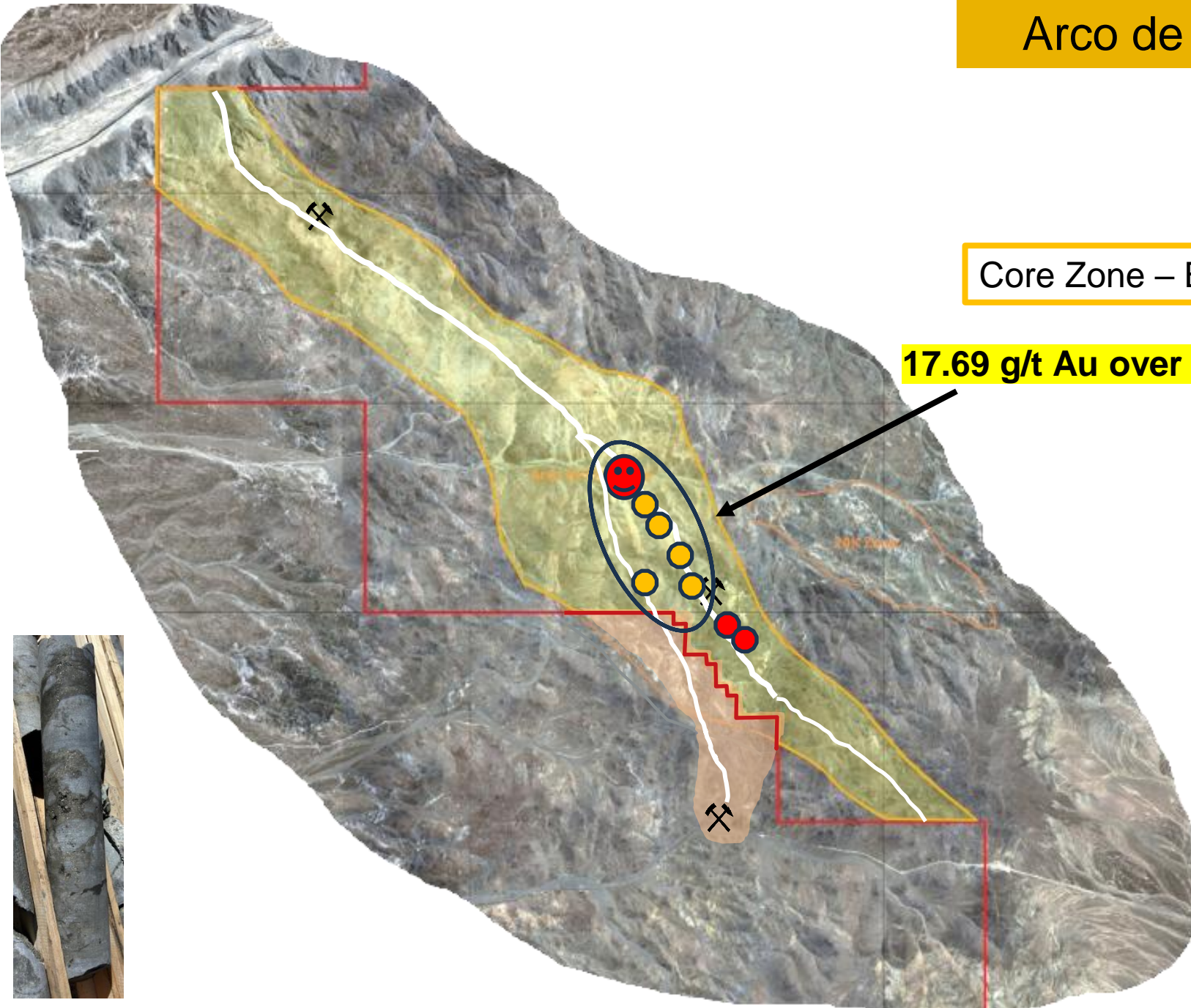
Hole #		From(m)	To(m)	Width(m)	Cu %	Au g/t
SAL 02-24 & SAL 03-24	including					
	including					

Pending

Arco de Oro - Drill Results (cont'd)

Core Zone – Blended Average Results So Far

17.69 g/t Au over 2.5 m width over 1 km of strike length



Arco de Oro **SUMMARY**

Drilling conducted over only
1.5 Km of 5.0 Km
of total strike length visible
from surface artisanal workings

Significant Grades Already Drilled

Multi-Million OZ Au Deposit Potential

